

AMBIENT CONDITIONS MODULE



Ambient conditions module is designed to measure ambient conditions at the workstation in the process of pipettes calibration and other similar applications. An integral part of the ambient conditions module is a computer software enabling continuous readout and record of metrological data. The ambient conditions module has calibration certificate.

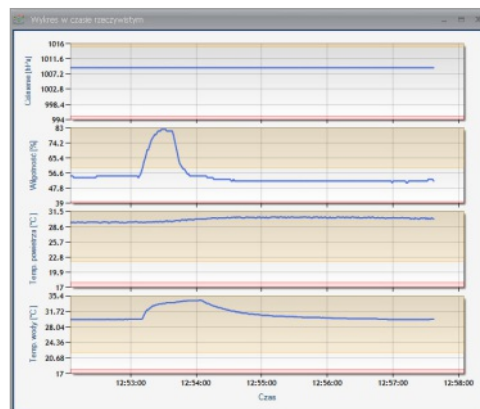
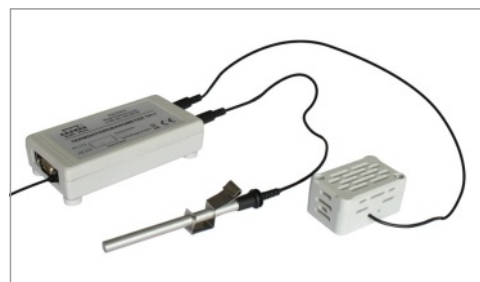
Ambient conditions module comprises:

- a measuring unit (temperature - humidity - pressure measuring unit TH-1), featuring a probe for atmospheric air measurement and device controlling systems,
- two measuring probes:
 - water temperature probe TH-W (or other liquid),
 - air temperature and humidity probe TH-AH,
- computer software cooperating with the measuring unit.

The measuring unit is powered from an external power adapter 230V/11 VAC 50Hz.

Functions:

- continuous readout and record of metrological data:
 - atmospheric pressure,
 - humidity,
 - air temperature,
 - water (liquid) temperature,
- generation and record of charts on humidity, temperature, atmospheric pressure in time function,
 - setting critical parameters of ambient conditions, which exceeding causes immediate information sent to an operator through installed signaling system,
 - accessible language version of computer software interface: Polish, English, German.



Technical data:

Range of measured temperature	-10°C ÷ 85°C
Readability of temperature measurement	d=0,1°C error 0,4°C (range 15°C+30°C)
Range of measured air pressure	850 ÷ 1050 hPa
Readability of air pressure measurement	D=1hPa error = 5hPa
Range of measured humidity	0 ÷ 100%
Readability of measured humidity	d=1% error = 10%
Water temperature probe TH-W	liquid temperature measurement (cable length 3m)
Air probe TH-AH	air temperature and air humidity measurement (cable length 3m)
Working temperature	-10 ÷ 40°C
Housing	plastic
Power supply	230VAC/11VAC 50Hz
Interfaces	RS232
Dimensions (mm) without handle	131×68×34
Net weight	0,75kg

PARTNER CORPORATION S.R.L.

Str.Mures, nr.63, sect.1, Bucuresti

tel/fax 021.2240995; 021.2242257

www.partner.com.ro

office@partner.com.ro