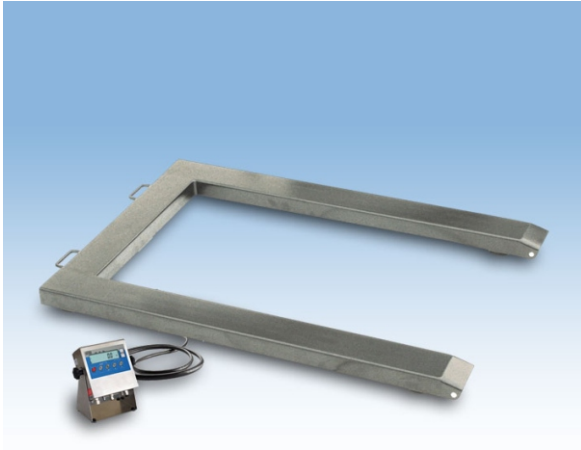


STAINLESS STEEL PALLET SCALES



Pallet scales are stable 4 load cell constructions designed for weighing of pallets. The load can be placed on the platform by average fork-lift truck. Pallet scales are manufactured in stainless steel technology.

Pallet scales are equipped with wheels and handles for simple usage and transport of the scale. The scale has backlit LCD indicator PUE C/31 H installed on a three meter long cable

Range of capacities for this scale is from 600 kg /200 g to 3000 kg /1000 g. power supply 230V AC and SLA internal accumulator, RS 232 output as standard.



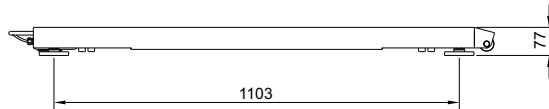
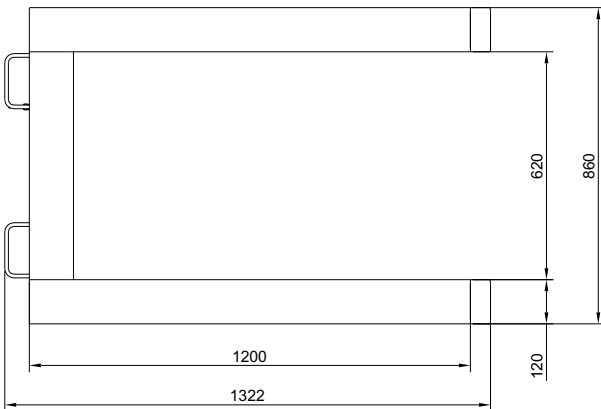
Counting pieces



Checkweighing



Summing function



Technical data:

| | WPT/4P 600H | WPT/4P 1000H | WPT/4P 2000H | WPT/4P 3000H |
|---------------------|--|--------------|--------------|--------------|
| Max capacity | 600 kg | 1000 kg | 2000 kg | 3000 kg |
| Readability | 200 g | 500 g | 1000 g | 1000 g |
| Tare range | -600 kg | -1000 kg | -2000 kg | -3000 kg |
| Pan size | 860×1260 mm | | | |
| Working temperature | -10° - +40 °C | | | |
| Output signal | RS 232 | | | |
| IP rating | IP 68 construction, IP 66/67 indicator | | | |
| Power supply | 230V AC, 50Hz and SLA internal accumulator | | | |
| Display | LCD (backlit) | | | |
| Mass | 50 kg | | | |

Additional equipment:

| | |
|-------------------------------|---|
| RACK FOR HEAD | RAMPS FOR LOW PROFILED SCALE |
| LCD ADDITIONAL DISPLAY | COMPUTER SOFTWARE: PW-WIN, RAD-KEY, REC-FS, LS-FS |
| LARGE SIZE ADDITIONAL DISPLAY | RS 232/RS 485 CONVERTER |
| "KAFKA" THERMAL PRINTER | EXTERNAL POWER OUTPUT |
| NEEDLE PRINTER "EPSON" | |

PALLET SCALES



Pallet scales are stable and proved 4 load cell constructions designed for weighing of pallets. The load can be placed on the platform by average fork-lift truck. Pallet scales are manufactured in mild steel version.



Counting pieces



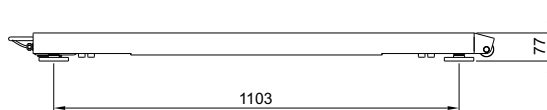
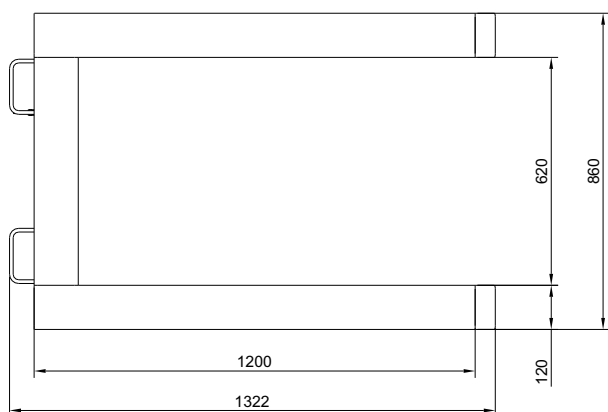
Checkweighing



Summing function

Pallet scales are equipped with wheels and handles for simple usage and transport of the scale. The scale has backlit LCD indicator PUE C/31 installed on a three meter long cable.

Range of capacities for this scale is from 600kg /200g to 3000kg /1000g. power supply 230V AC/ 11VAC and 6×AA, RS 232 output as standard.



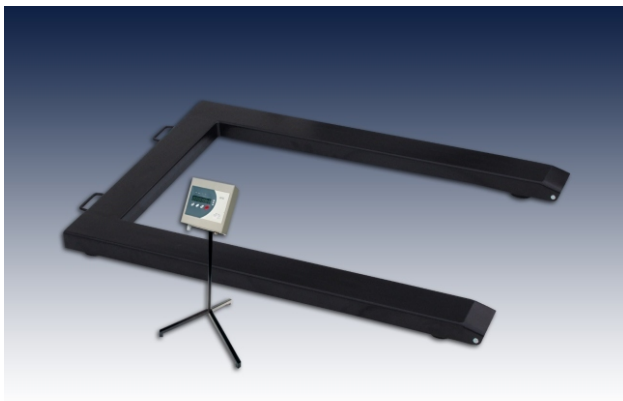
Technical data:

| | WPT/4P 600C | WPT/4P 1000C | WPT/4P 2000C | WPT/4P 3000C |
|---------------------|-------------------------------------|--------------|--------------|--------------|
| Max capacity | 600 kg | 1000 kg | 2000 kg | 3000 kg |
| Readability | 200 g | 500 g | 1000 g | 1000 g |
| Tare range | -600 kg | -1000 kg | -2000 kg | -3000 kg |
| Pan size | 860×1200 mm | | | |
| Working temperature | -10° - +40 °C | | | |
| Output signal | RS 232 | | | |
| IP rating | IP 67 construction, IP 54 indicator | | | |
| Power supply | 230V AC 50Hz/11V AC 6×AA | | | |
| Display | LCD (backlit) | | | |
| Mass | 50 kg | | | |

Additional equipment:

| | |
|-------------------------------|---|
| RACK FOR HEAD | RAMPS FOR LOW PROFILED SCALE |
| LCD ADDITIONAL DISPLAY | COMPUTER SOFTWARE: PW-WIN, RAD-KEY, REC-FS, LS-FS |
| LARGE SIZE ADDITIONAL DISPLAY | RS 232/RS 485 CONVERTER |
| "KAFKA" THERMAL PRINTER | EXTERNAL POWER OUTPUT |
| NEEDLE PRINTER "EPSON" | |

PALLET SCALES



Pallet scales are stable and proved 4 load cell constructions designed for weighing of pallets. The load can be placed on the platform by average fork-lift truck. Pallet scales are manufactured in mild steel version or optionally as stainless steel solution. Pallet scales are equipped with wheels and handles for simple usage and transport of the scale. The scale has LED indicator installed on a three meter long cable. Range of capacities for this scale is from 600 kg/200 g to 3000 kg/1000 g. Power supply 230V AC, RS 232 output as standard.



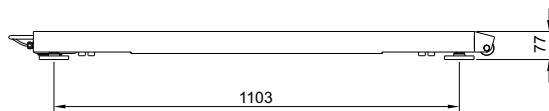
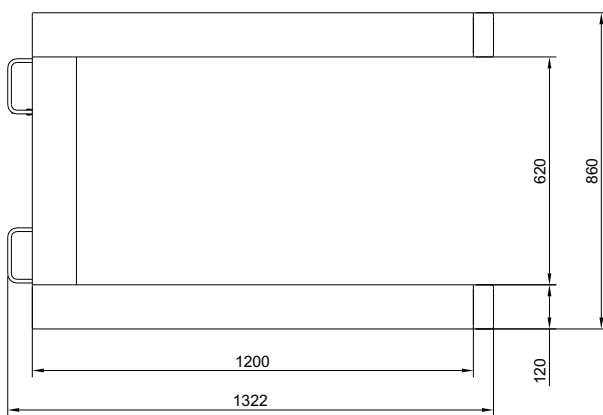
Counting pieces



Checkweighing



Summing function



Technical data:

| | WPT/4P 600S | WPT/4P 1000S | WPT/4P 2000S | WPT/4P 3000S |
|---------------------|---|--------------|--------------|--------------|
| Max capacity | 600 kg | 1000 kg | 2000 kg | 3000 kg |
| Readability | 200 g | 500 g | 1000 g | 1000 g |
| Tare range | -600 kg | -1000 kg | -2000 kg | -3000 kg |
| Pan size | 860×1260 mm | | | |
| Working temperature | -10° - +40 °C | | | |
| Output signal | RS 232 | | | |
| IP rating | IP 65 (IP 67 for stainless steel version) | | | |
| Power supply | 230V AC, 50Hz | | | |
| Display | LED | | | |
| Mass | 50 kg | | | |

Additional equipment:

- RACK FOR HEAD
- HANDLE TO STEEL HEAD TO MOUNT IT TO WALL/TABLE
- LCD ADDITIONAL DISPLAY
- LARGE SIZE ADDITIONAL DISPLAY
- "KAFKA" THERMAL PRINTER
- NEEDLE PRINTER "EPSON"
- "POMIAR WIN" COMPUTER SOFTWARE
- "RADKEY" COMPUTER SOFTWARE
- "RECEPTURY" COMPUTER SOFTWARE
- "LICZENIE SZTUK" COMPUTER SOFTWARE
- RS 232/RS 485 CONVERTER
- EXTERNAL POWER OUTPUT

PARTNER CORPORATION S.R.L.

Str. Mures nr. 63 sector 1 Bucuresti ROMANIA
 Telefon/Fax: 021-224.09.95 021-224.14.74
 021-224.22.57

www.partner.com.ro office@partner.com.ro

DISTRIBUTOR: